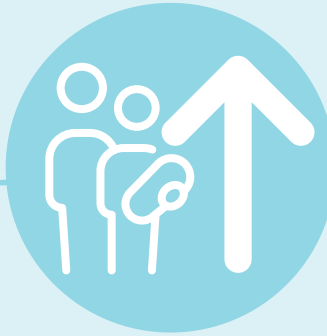


Population



**57,517**

Population increase over  
the last 5 years



**3,595**

Labour  
force



**33,601**

Gross Regional  
Product



**\$5.02 billion**

GRP percentage increase  
over the last year



**12%**

Number of  
businesses



**5,127**

Median house  
price



**\$590,000**

Construction certificates  
issued (FY2023)

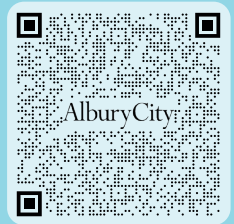


**613**

Value of construction  
certificates (FY2023)



**\$200 million**



Population



**101,793**

Population increase over  
the last 5 years



**6,330**

Labour  
force



**57,557**

Gross Regional  
Product



**\$9.24 billion**

GRP percentage increase  
over the last year



**11%**

Number of  
businesses



**8,386**

Visitor numbers  
(FY2023)



**2.0 million**

Visitor spending  
(FY2023)



**\$686 million**

Value of construction  
certificates (FY2023)



**\$393 million**