



169 Beechworth Road Wodonga VIC

- Comprising approx. 180 sqm
- Profile location
- Enormous exposure
- Includes reception & multiple office space
- New air-conditioning to be installed
- On-site parking & amenities

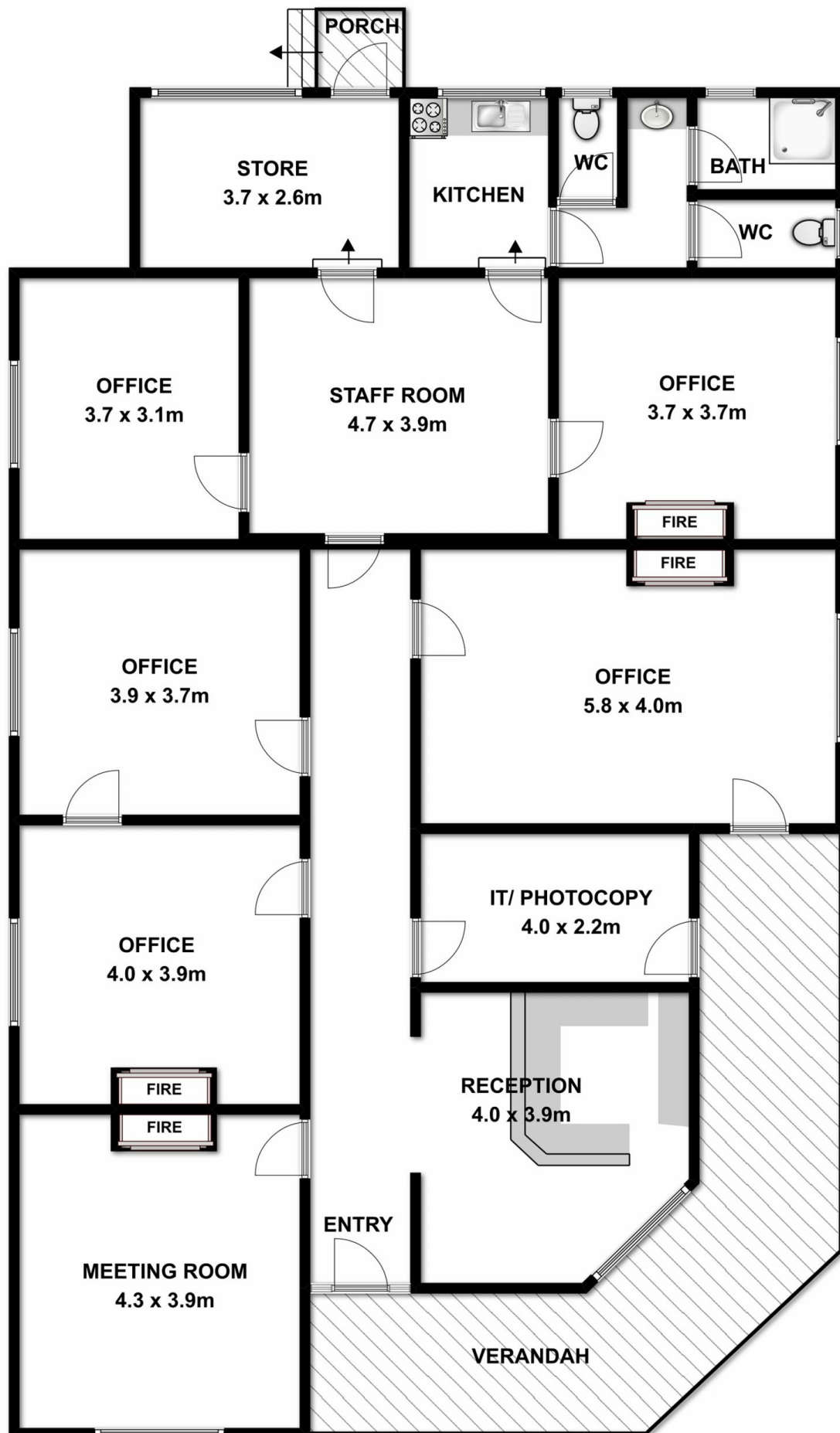
Building Size : 180 sqm
View : <https://www.dixoncre.au/lease/vic/north-eastern/wodonga/commercial/offices/5851951>



Chris Brown
02 6055 0000



Nathan Last
0457 934 842



Measurements are approximate. Not to scale. For illustrative purposes only.