

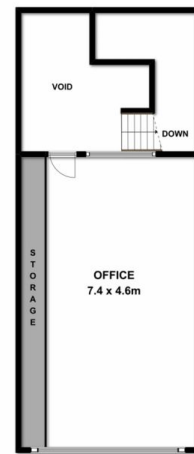
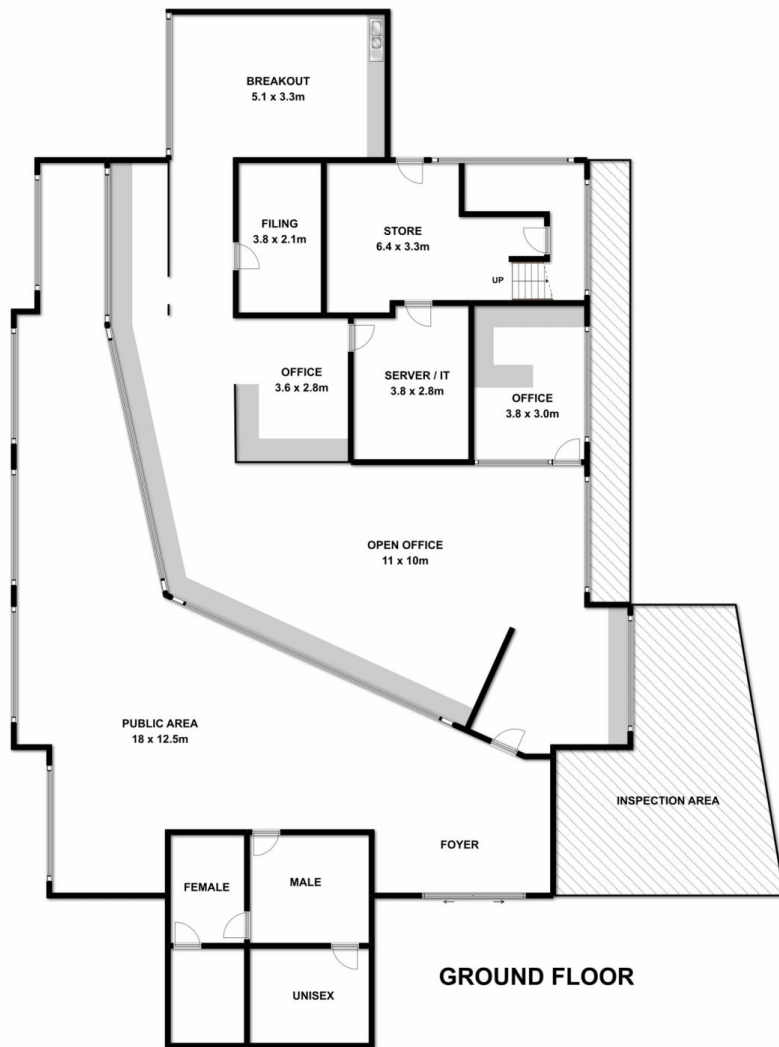


428 Macauley Street Albury NSW

- Building area of 327 sqm (approx.)
- Site area of 2,494 sqm (approx.)
- On-site car parking
- Two (2) street frontages
- Zoned - B4 Mixed Use

Land Size : 2494 sqm

View : <https://www.dixoncre.au/sale/nsw/murray-region/albury/commercial/offices/5851483>



Measurements are approximate. Not to Scale. For illustrative purposes only.