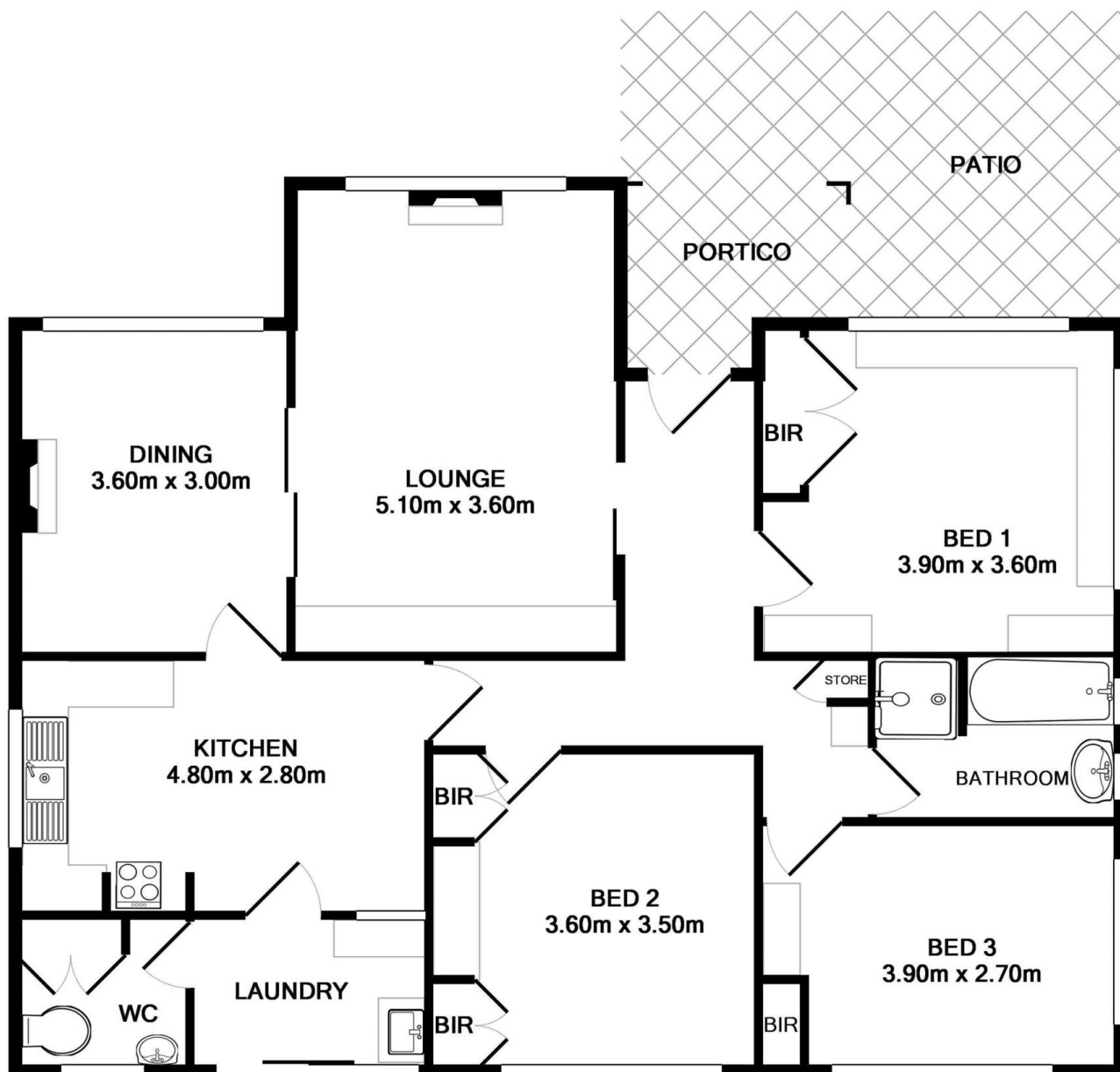




## 21 Stanley Street Wodonga VIC

- Comprising area of 2,023 sqm (approx.)
  - Frontage to Stanley Street of 20 metres
  - Existing three (3) bedroom brick residence suitable for commercial conversion
  - Commercial 2 Zoning at front
  - Residential 1 Zoning at rear
  - Access from Boronia Place (STCA)
- TERMS: 10% Deposit, Balance 30 days

**Land Size** : 2023 sqm  
**View** : <https://www.dixoncre.au/sale/vic/north-eastern/wodonga/commercial/development/5851450>



Measurements are approximate. Not to Scale. For Illustrative purposes only.