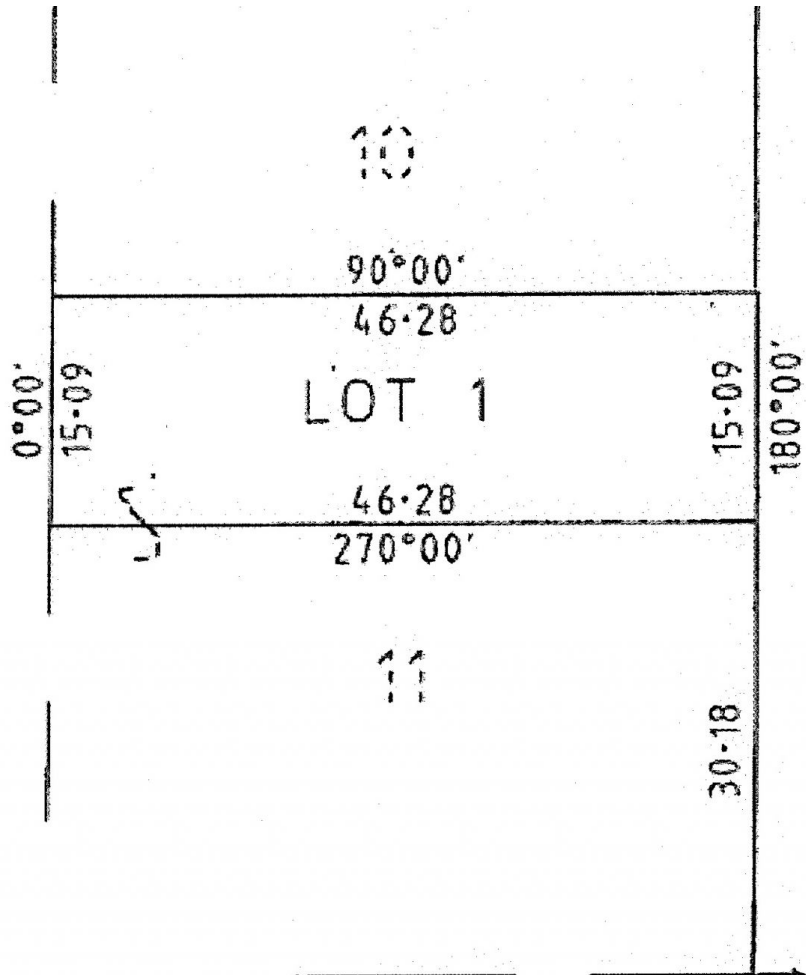


87 Hume Street Wodonga VIC

- Owner occupier - single storey development opportunity with permit
- Footprint possible 700 sqm (approx.)
- 45 car parks adjoin development
- Side walk to shop fronts
- Through access to car park at Wodonga Plaza
- Central city business hub
- Local Architect plans available

Land Size : 700 sqm
View : <https://www.dixoncre.au/sale/vic/north-eastern/wodonga/commercial/development/5851319>



HUME STREET

S.E. CORNER
OF C.A. 11